

76 Trombones

1 6 1 Solo [A]

3

[B]

(f)

[C]

[D]

1 6 1

[E] 3 [F]

[Optional tacet (can be played by Trum III)]

[G] play!

1 6 1

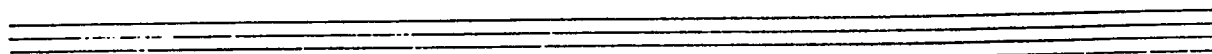
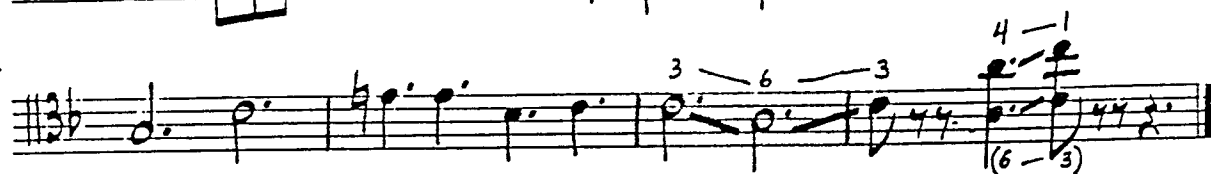
Trombone II

76 Trombones

arr. Michael Levin

(based on previous
arrangement by
Tommy Peterson)

Handwritten musical score for Trombone II, titled "76 Trombones". The score is written on ten staves, each beginning with a treble clef and a key signature of one flat (Bb). The time signature is 3/8. The music features various rhythmic patterns, including eighth and sixteenth notes, and rests. Key markings include "Solo" and "mf" (mezzo-forte). The score is divided into sections labeled A, B, C, D, E, and F. Section A includes a measure with a "2" and a "5" above it, and a measure with a "2" and a "5" below it. Section B includes a measure with a "2" and a "5" above it, and a measure with a "2" and a "5" below it. Section C includes a measure with a "2" and a "5" above it, and a measure with a "2" and a "5" below it. Section D includes a measure with a "2" and a "5" above it, and a measure with a "2" and a "5" below it. Section E includes a measure with a "2" and a "5" above it, and a measure with a "2" and a "5" below it. Section F includes a measure with a "2" and a "5" above it, and a measure with a "2" and a "5" below it.



Handwritten musical score for a 12-measure piece. The score is written on ten staves, with the first two staves forming the first measure and the remaining eight staves forming the subsequent measures. The notation includes various musical symbols such as notes, rests, accidentals, and dynamic markings. Section markers A, B, C, D, E, F, and G are placed throughout the score. The piece concludes with a final measure on the last staff.

Measure 1 (Staves 1-2): The first measure is marked with a *mp* dynamic. It features a melodic line on the first staff and a bass line on the second staff. Section marker **A** is placed above the second staff.

Measure 2 (Staves 3-4): The second measure is marked with a *p* dynamic. It features a melodic line on the third staff and a bass line on the fourth staff. Section marker **B** is placed above the fourth staff.

Measure 3 (Staves 5-6): The third measure is marked with a *mp* dynamic. It features a melodic line on the fifth staff and a bass line on the sixth staff. Section marker **C** is placed above the sixth staff.

Measure 4 (Staves 7-8): The fourth measure is marked with a *p* dynamic. It features a melodic line on the seventh staff and a bass line on the eighth staff. Section marker **D** is placed above the eighth staff.

Measure 5 (Staves 9-10): The fifth measure is marked with a *mp* dynamic. It features a melodic line on the ninth staff and a bass line on the tenth staff. Section marker **E** is placed above the tenth staff.

Measure 6 (Staves 11-12): The sixth measure is marked with a *ff* dynamic. It features a melodic line on the eleventh staff and a bass line on the twelfth staff. Section marker **F** is placed above the twelfth staff.

Measure 7 (Staves 13-14): The seventh measure is marked with a *mp* dynamic. It features a melodic line on the thirteenth staff and a bass line on the fourteenth staff. Section marker **G** is placed above the fourteenth staff.

Measure 8 (Staves 15-16): The eighth measure is marked with a *p* dynamic. It features a melodic line on the fifteenth staff and a bass line on the sixteenth staff. Section marker **H** is placed above the sixteenth staff.

Measure 9 (Staves 17-18): The ninth measure is marked with a *mp* dynamic. It features a melodic line on the seventeenth staff and a bass line on the eighteenth staff. Section marker **I** is placed above the eighteenth staff.

Measure 10 (Staves 19-20): The tenth measure is marked with a *p* dynamic. It features a melodic line on the nineteenth staff and a bass line on the twentieth staff. Section marker **J** is placed above the twentieth staff.

Measure 11 (Staves 21-22): The eleventh measure is marked with a *mp* dynamic. It features a melodic line on the twenty-first staff and a bass line on the twenty-second staff. Section marker **K** is placed above the twenty-second staff.

Measure 12 (Staves 23-24): The twelfth measure is marked with a *p* dynamic. It features a melodic line on the twenty-third staff and a bass line on the twenty-fourth staff. Section marker **L** is placed above the twenty-fourth staff.

arr. Michael Leonard
(based on previous
arrangement by
Tammy Anderson)16 Trombones

"76"

2-

Trom. IV

Handwritten musical score for Trombone IV, numbered "76". The score consists of six staves of music, followed by two empty staves. The key signature is one flat (B-flat), and the time signature is 4/4. The music is written in bass clef. The first staff begins with a boxed "F" indicating the starting note. The second staff contains a measure with a circled "b" indicating a flat. The third staff contains a measure with a boxed "G" indicating the starting note. The notation includes various rhythmic values (quarter, eighth, and sixteenth notes) and rests. The score ends with a double bar line on the sixth staff.